



WOUND CARE
BECAUSE YOU CARE



MINIMISES
EPIDERMAL
STRIPPING



REDUCES PAIN
AT DRESSING
CHANGES



PROTECTS THE
PERIWOUND



HIGH
ABSORPTION

SILICONE FOAM RANGE

WOUND CARE
BECAUSE YOU CARE

FEATURES

Highly conformable // High absorption of exudate // Can remain in situ for up to 7 days // Minimises epidermal stripping // Promotes healing through a moist wound environment // Prevents pain at dressing changes // Protects the periwound // For moderately to heavily exuding wounds //

ACTIVHEAL® SILICONE FOAM DRESSINGS HAVE A GENTLE BUT SECURE ADHESION WITH MINIMAL EPIDERMAL STRIPPING OR PAIN ON REMOVAL

ActivHeal® Silicone Foam Border and Non-Border dressings are constructed from a low friction waterproof polyurethane film, with a highly absorbing polyurethane central pad and a superior silicone adhesive wound contact layer.

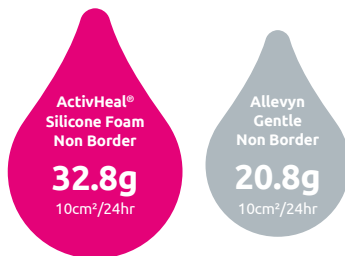
ActivHeal® Silicone Border and Non-Border Foam dressings are for use when adherence to the wound is a potential problem due to fragile skin. The perforated silicone coated wound contact later prevents the dressing from sticking to the wound and reduces pain during dressing changes. The perforations allow the uptake of exudate and prevents excess fluid causing maceration to healthy skin. ActivHeal® Silicone Border and Non-Border Foam dressings maintain a moist wound environment and aids the wound healing process.



PERFORMANCE

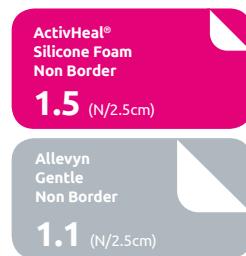
Total Fluid Handling Performance¹

Be confident this foam can handle wound exudate.



Peel adhesion²

Secure but with pain free removal.



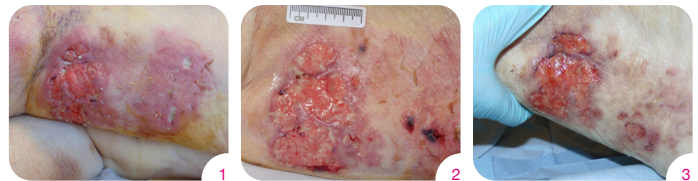
SIZES AND CODES

| ACTIVHEAL® | | SILICONE FOAM BORDER | | | SILICONE FOAM NON-BORDER | | |
|------------|-----|----------------------|-------------|------------------|--------------------------|-------------|------------------|
| SIZE (CM) | QTY | PRODUCT CODE | DT PIP CODE | NHS SUPPLY CHAIN | PRODUCT CODE | DT PIP CODE | NHS SUPPLY CHAIN |
| 5x5 | 10 | | | | 9001548 | 402-5383 | ELA847 |
| 7.5x7.5 | 10 | 9001470 | 402-5318 | ELA843 | 9001555 | 402-5391 | ELA834 |
| 10x10 | 10 | 9001487 | 402-5326 | ELA838 | 9001562 | 402-5417 | ELA844 |
| 12.5x12.5 | 10 | 9001494 | 402-5334 | ELA840 | | | |
| 10x20 | 10 | 9001500 | 402-5342 | ELA839 | 9001579 | 402-5441 | ELA833 |
| 15x15 | 10 | 9001517 | 402-5359 | ELA841 | 9001449 | 402-5425 | ELA845 |
| 20x20 | 10 | 9001524 | 402-5367 | ELA842 | 9001586 | 402-5433 | ELA846 |
| Sacral | 10 | 9001531 | 402-5375 | ELA848 | | | |

ActivHeal® Silicone Foam is available through a variety of channels and via Drug Tariff.

CASE STUDY

Patient X, is a 72 year old female presented with pressure damage following the removal of a full leg cast to the right leg having fractured the right patella. She had a history of diabetes, hypothyroidism and cirrhosis and the patient was also very immobile. Following a full wound assessment from the TVN, the wound was categorised as having a full thickness tissue loss and had granulating tissue with areas of slough. A category 3 pressure ulcer was diagnosed.



- Day 1 - The levels of exudate were high. The surrounding skin had areas of erythema, but no maceration or excoriation. ActivHeal® Silicone Non border dressings were applied to assist in the management of exudate, prevent adherence and trauma at dressing changes along with providing a moist wound environment to aid wound healing. A honey dressing was applied underneath the foam and a bandage was used to secure the dressings.
- Day 3 - At the 2nd dressing change the wound was showing signs of improvement with a reduction in erythema. There were no signs of maceration or excoriation indicating that the exudate was being managed well by the dressings. The dressing regime continued.
- Day 13 - The wound continued to progress and reduce in size, with areas of new epithelial tissue being seen. There continued to be no signs of maceration or excoriation to the surrounding skin demonstrating that exudate was continually managed. The ActivHeal® Silicone Foam Non-Border was easy to remove and was atraumatic for the patient.

INDICATIONS

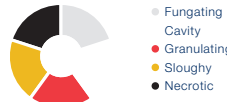
ActivHeal® Silicone Border and Non-Border Foam dressings are indicated for use on moderately to heavily exuding chronic and acute wounds. The dressing may be used throughout the healing process on:

- Venous and arterial leg ulcers
- Diabetic ulcers
- Post Operative Surgical Wounds
- Trauma wounds
- Pressure ulcers
- Superficial and partial thickness burns
- Skin Abrasions
- Use as a secondary dressing on cavity wounds

Moderate > Heavy Exudate



Wound Types



ActivHeal® Silicone Foam dressings are suitable for use under compression bandaging.

Advanced Medical Solutions Ltd

Premier Park, 33 Road One, Winsford Industrial Estate, Winsford, Cheshire CW7 3RT
T 08444 125 755 E activheal@admedsol.com W www.activheal.com



References 1.& 2. P3103R AMS Data on File (P3103R)

Allevyn Gentle is a registered trademark of Smith & Nephew.

© Advanced Medical Solutions 2020 // Review date May 2020 // Document code AMS/AH-009-02